



Sinus Headache

Seyedhadi Samimiardestani

Rhinologist

Tehran University of Medical Science



IHA IRANIAN HEADACHE ASSOCIATION



3rd Iranian Headache School
12- 13 October 2023/ Tehran/ Sina Hospital

سومین
مدرسسه
سر درد
ایران

۲۵ و ۲۱ مهر ماه ۱۴۰۲

تهران / بیمارستان سینا / مرکز همایش ها

Sinus headache

• migraine

Similarity

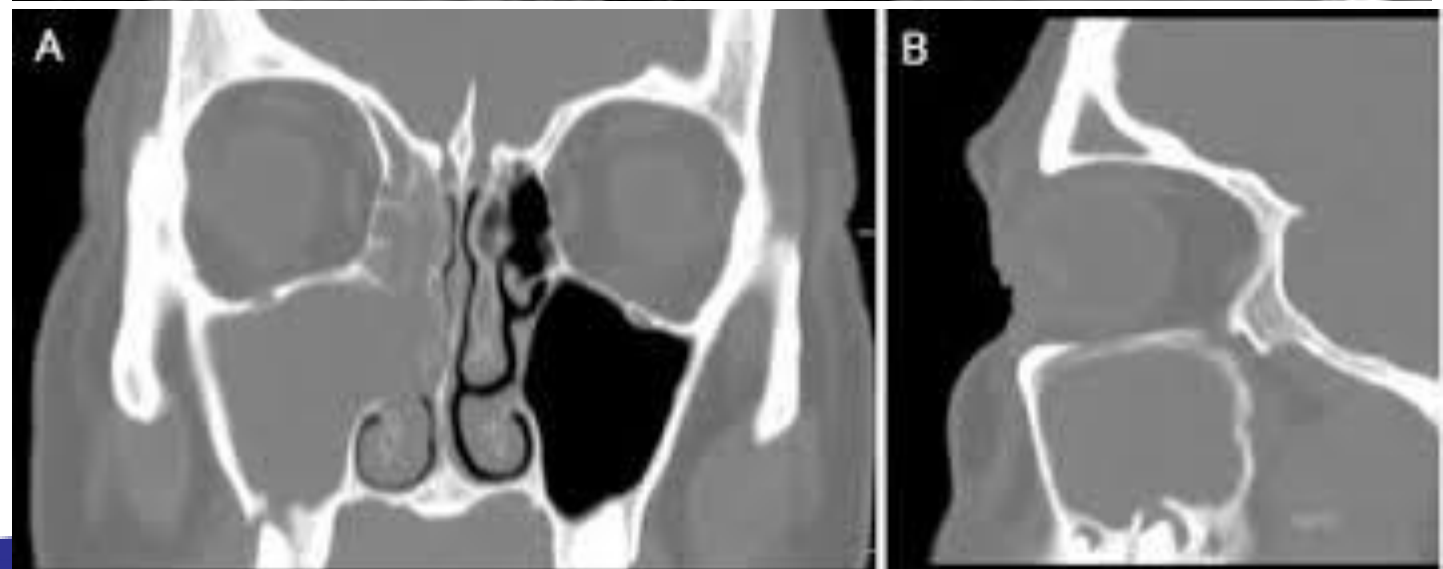
- Nasal symptoms
- Facial pain
- Worse when bend forward

Difference

- Dull pain
- Pressure
- Thick nasal discharge
- Loss of smell
- Pain on cheek ,tooth
- Tenderness
- Last days or longer

Maxillary sinus

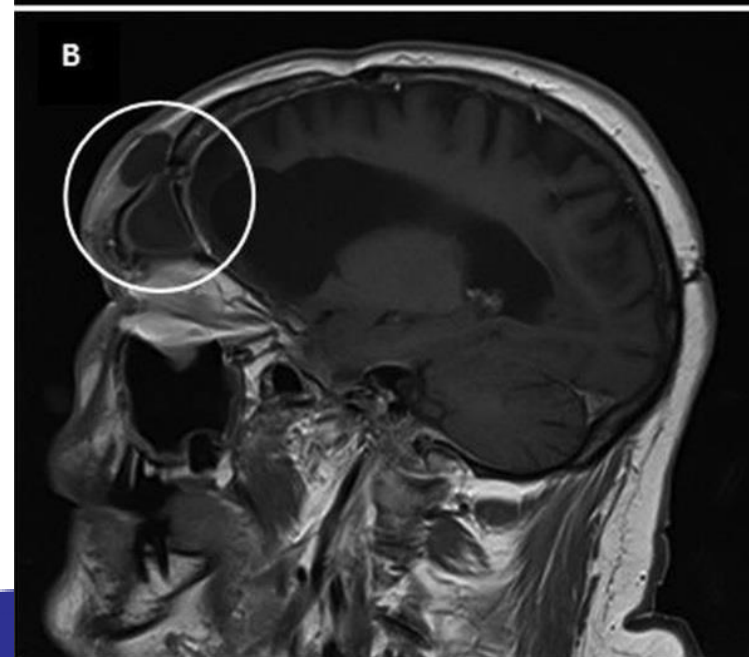
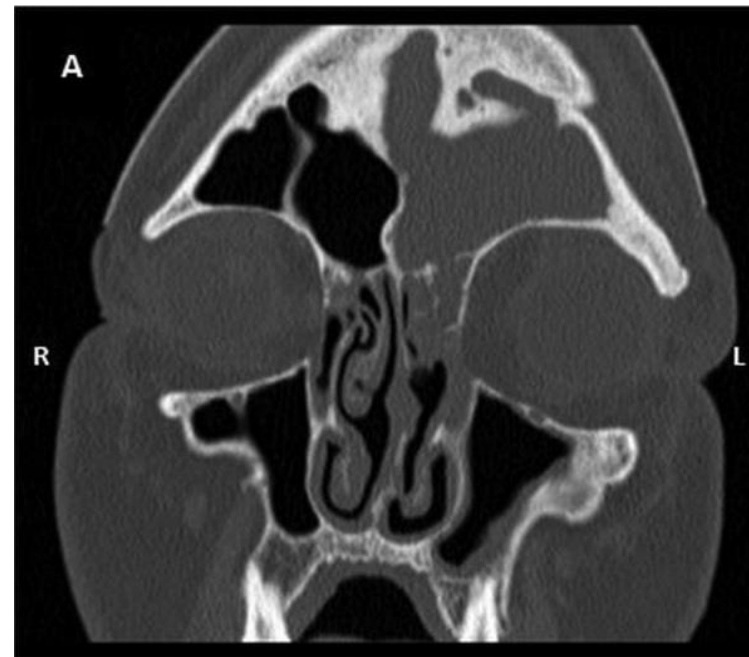
- Tooth pain
- Facial pressure
- Facial and lower eyelid edema
- Tooth caries



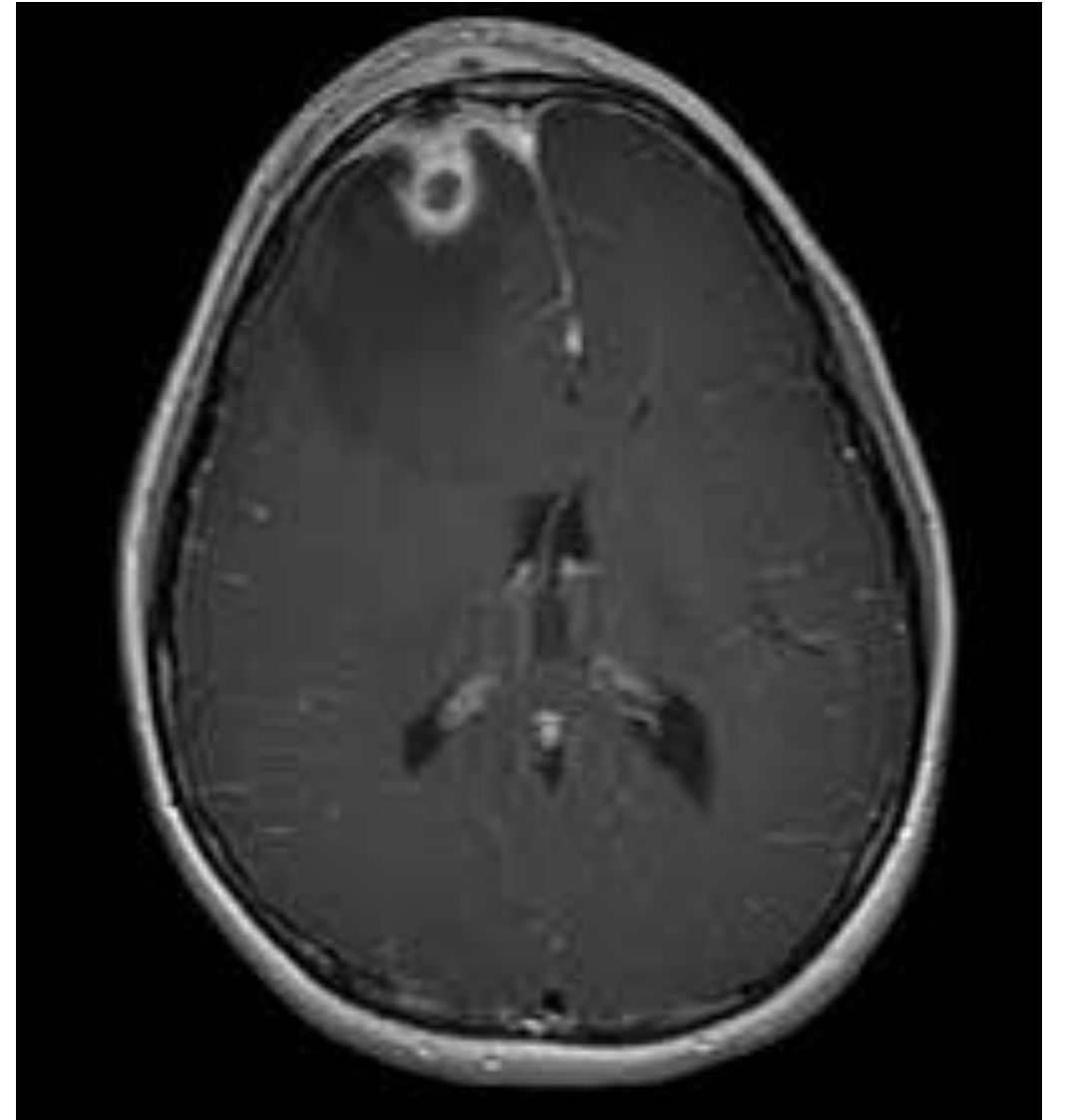
Frontal

- Pain
- Local tenderness
- Frontal edema (Potts puffy tumor)
- Upper eyelid edema

Pott puffy tumor



Pott puffy tumor



Ser.Nr.0EA

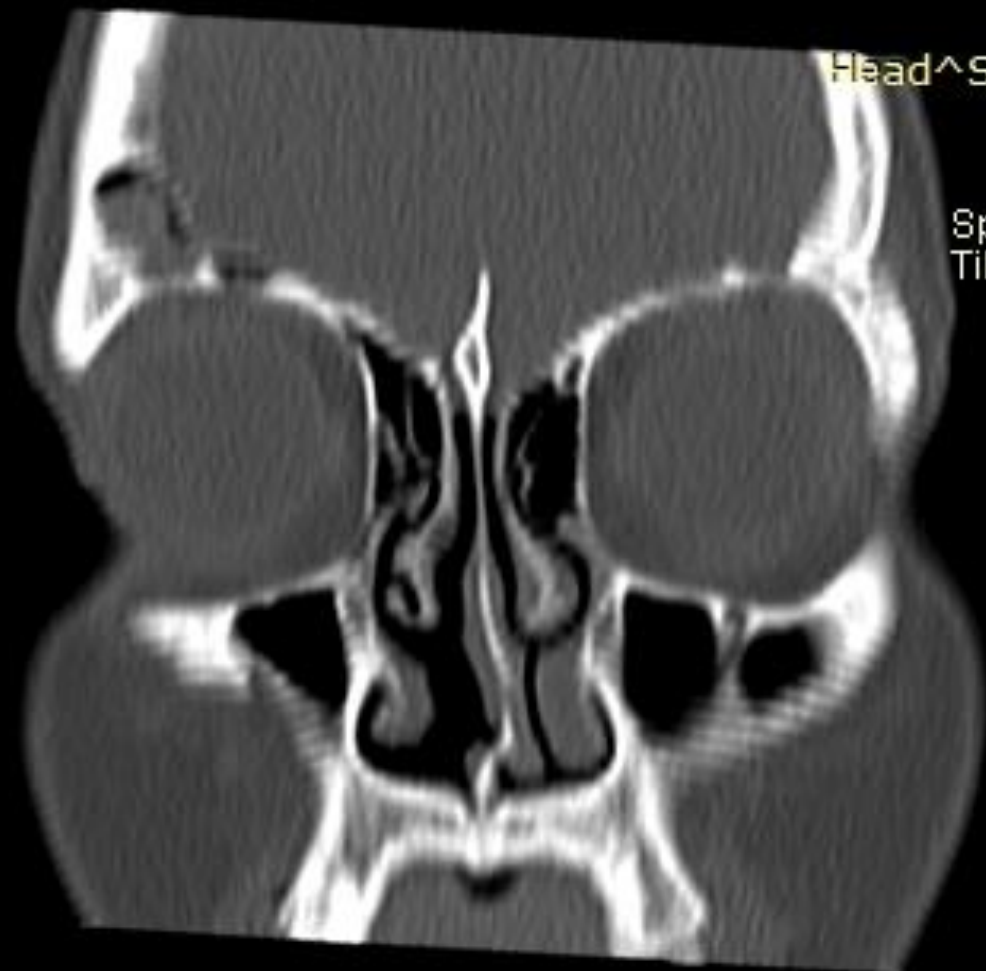
1

Head^Sinus (Adult)

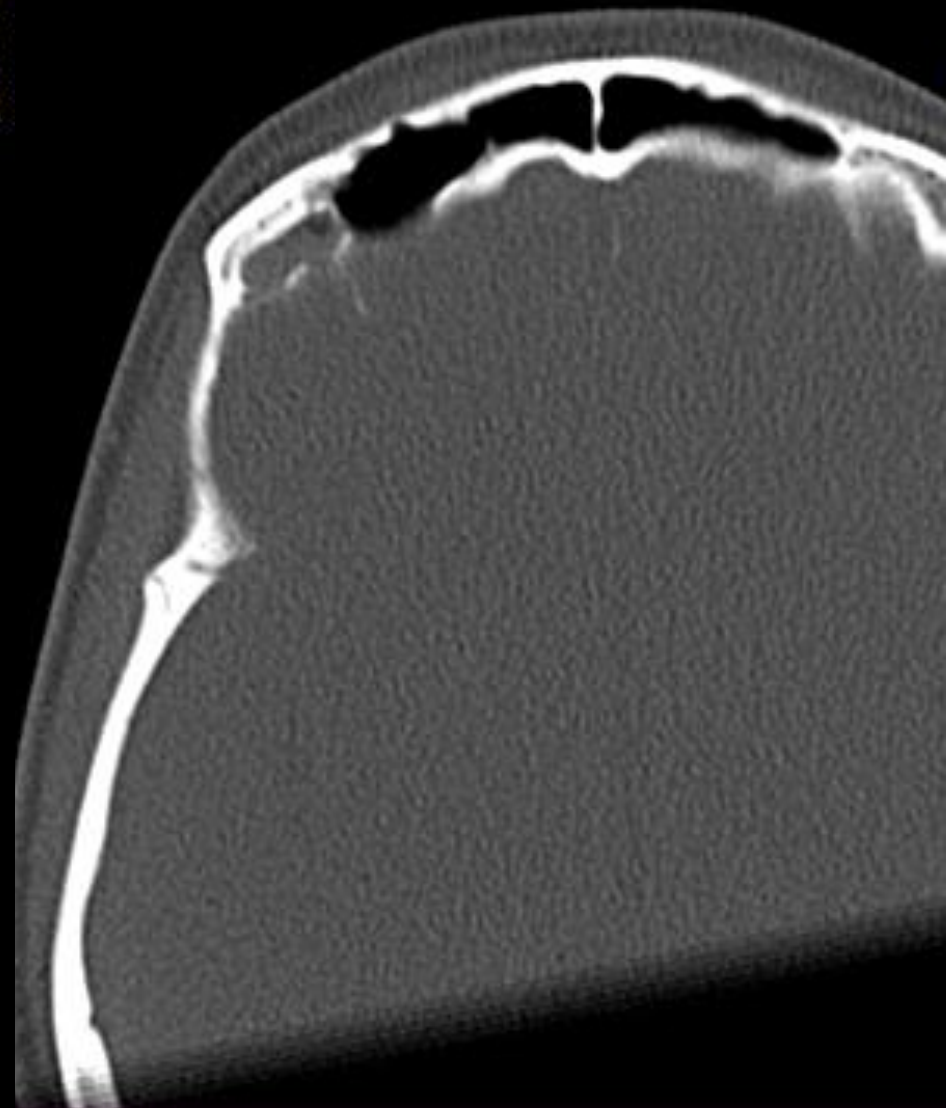
COR

Spin: -4

Tilt: -15



L



You have 5 days left in your trial period.
Purchase a license at <https://radiantviewer.com/store/>
This session will end in 1 minute.

You have 5 days left in your trial period.
Purchase a license at <https://radiantviewer.com/store/>
This session will end in 1 minute.

WL: 400

T: 3.0mm L: -238.1mm*

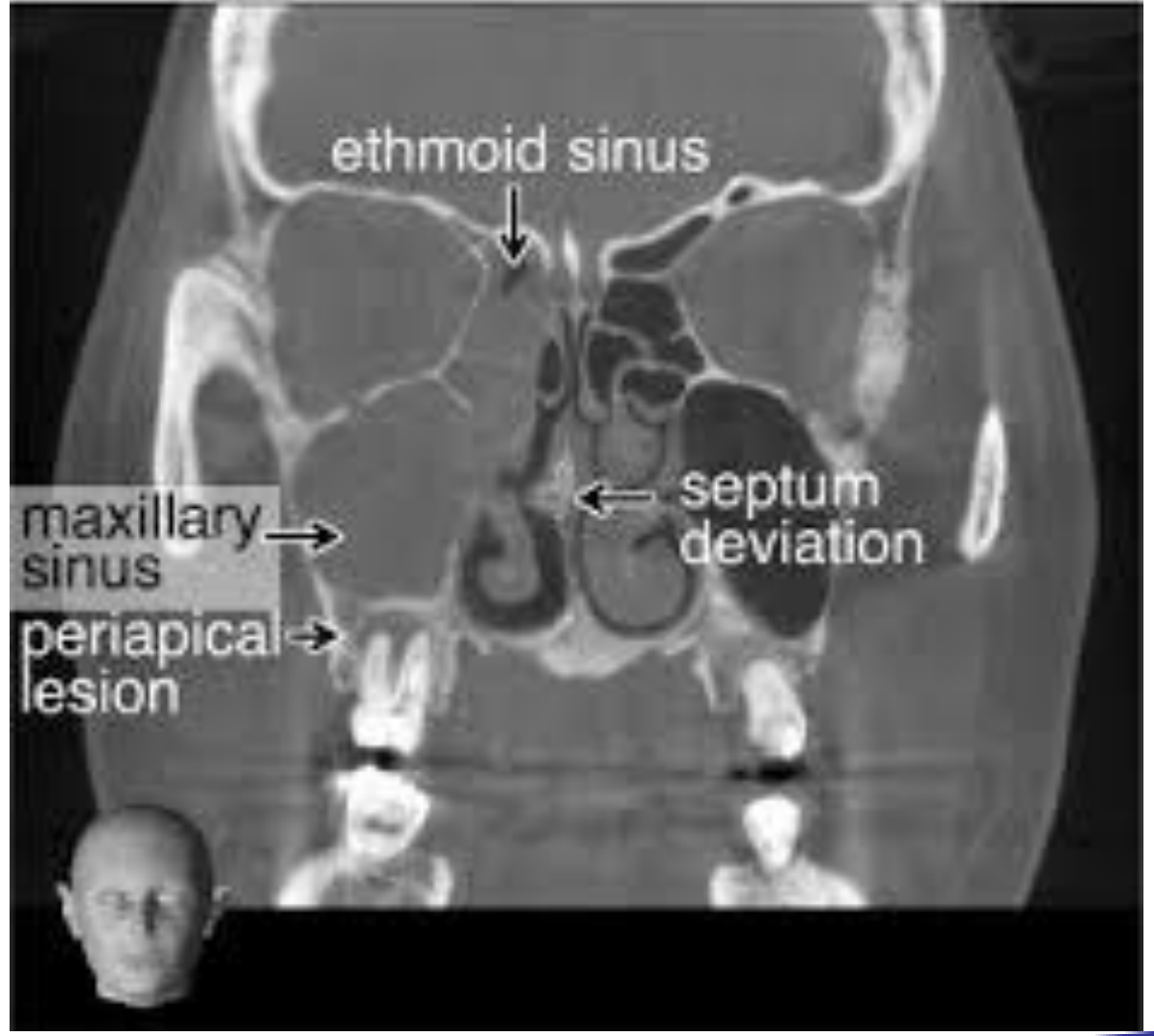
100kV

01/23/2022 10:52:11 ب.ظ ل: 107.5mm*

01/23

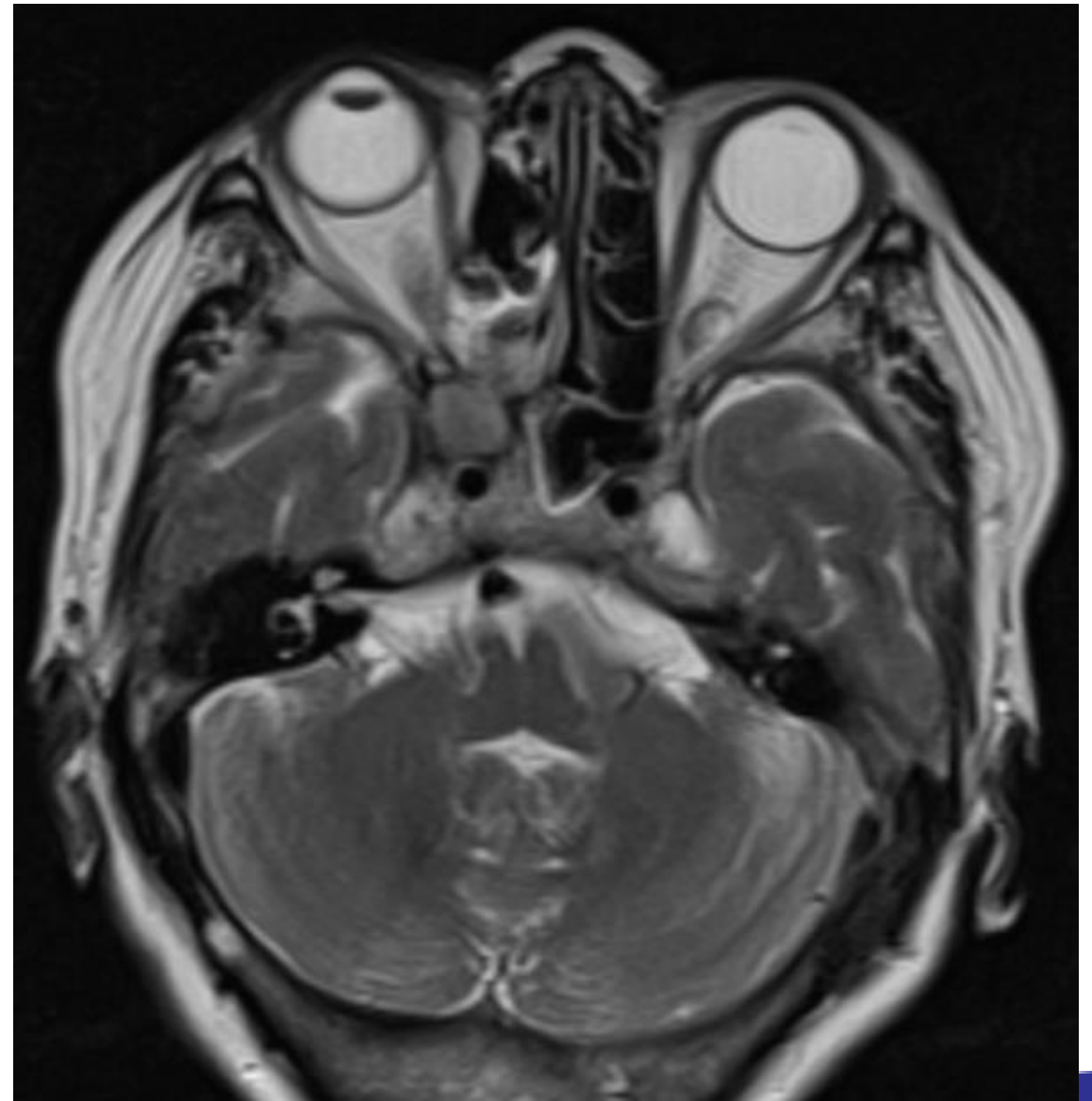
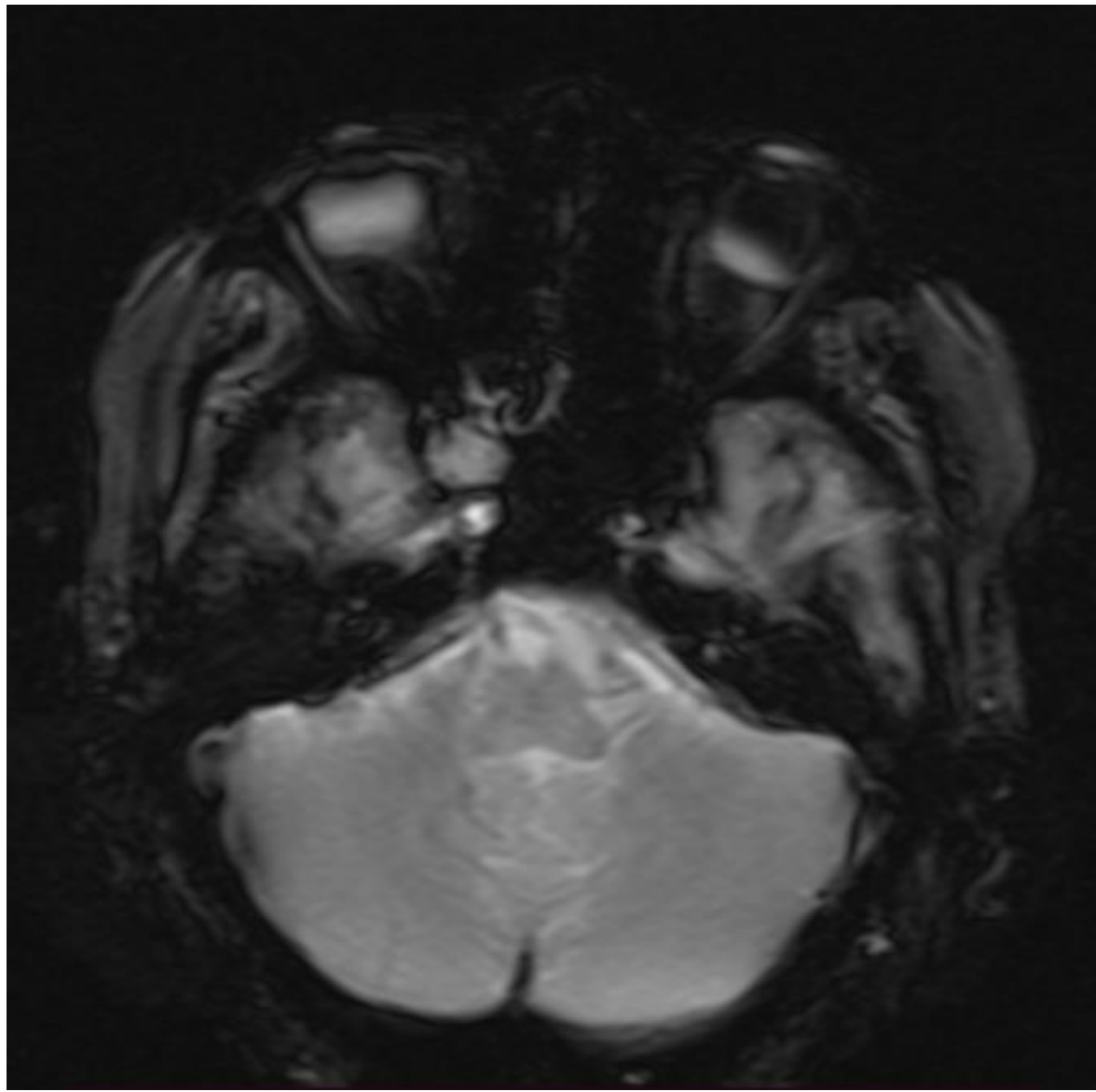
ethmoid

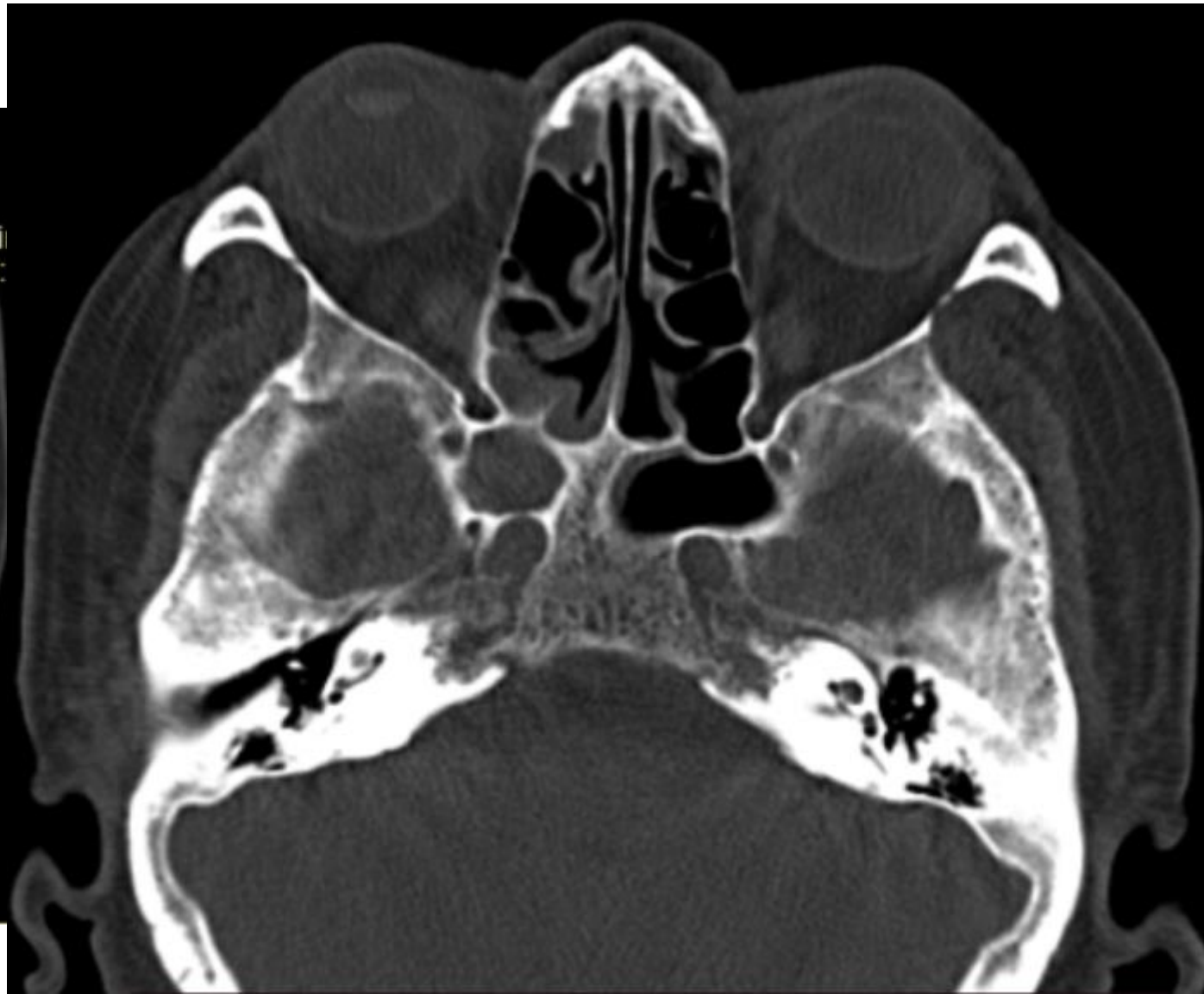
- Rarely isolated occurred
- Localized unilateral eye symptoms



sphenoid

- Headache behind eye and posterior of head
- Atypical headache
- Eye symptoms as pain on movement , paresis
- Eye edema is alarming sign







CT , MRI

- HR CT without contrast
- MRI with and without contrast

Treatment (art of medicine)

- Medical including Antibiotics , Local nasal
- Surgical : urgent / emergent in complication , elective after appropriate medical treatment

تشکر از توجه شما

